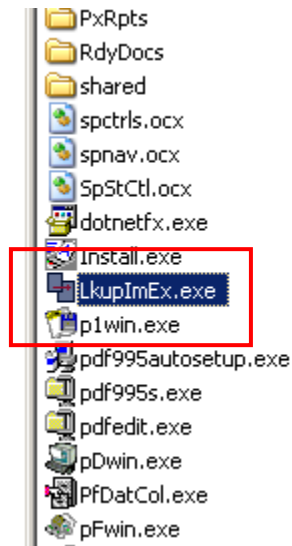


---

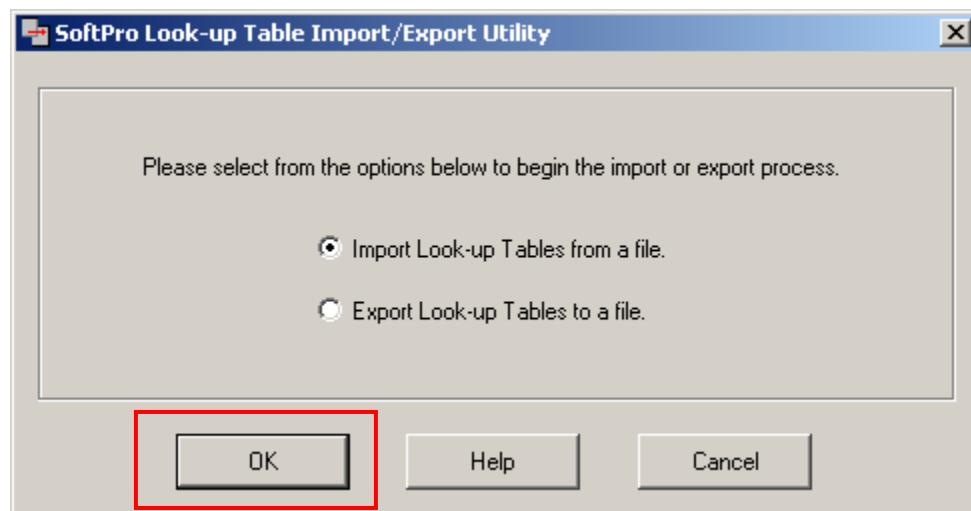
## Instructions for loading Investors Title of SC Title Insurance Rates

**NOTE: Make sure everyone is out of Proform before proceeding.**

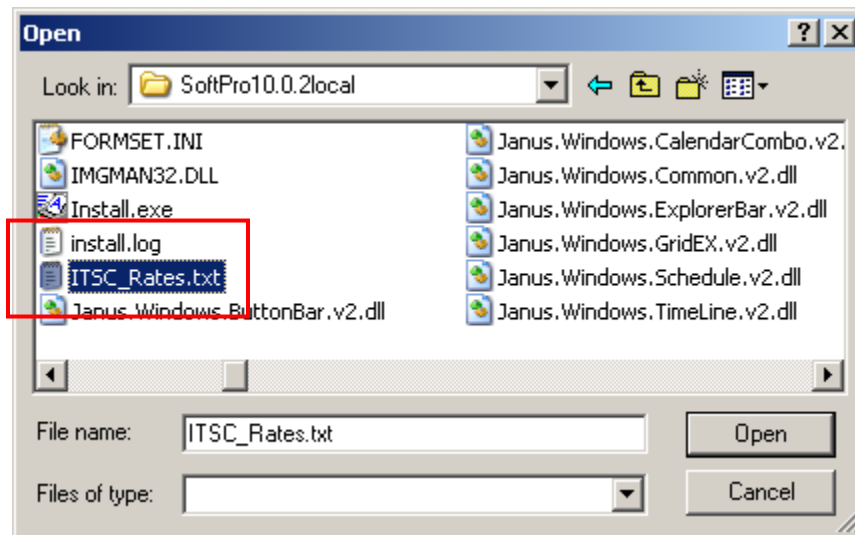
1. Copy the text file **ITSC\_Rates.txt** to **C:\Program Files\Softpro.**
2. Open up **Windows Explorer** or **My Computer.**
3. Browse to **C:\Program Files\SoftPro** and locate the file "**LkupImEx.exe**".



4. Double-click on the file to launch the utility. The utility defaults to "**Import Look-up Tables from a file**".



5. Select **OK**.
6. In the **Look In** box at the top of the screen, browse out to the **C:\Program Files\SoftPro** directory and locate the text file **"ITSC\_Rates.txt"**.



7. Select this file and click **Open**. This action will append your lookup tables to include the latest version of the title insurance rates.
8. Close out of the utility by selecting **Cancel**.

