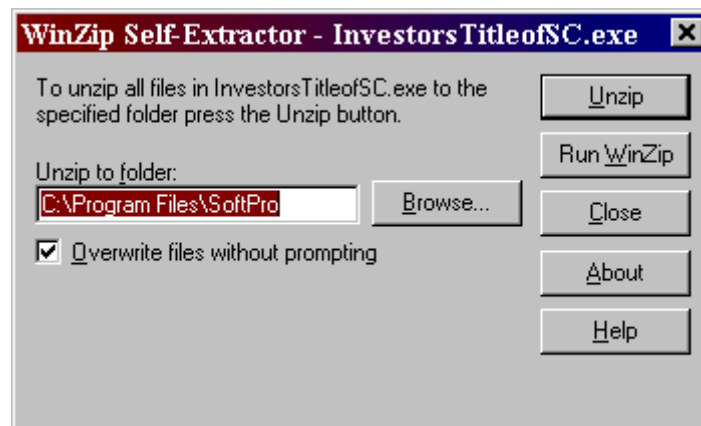


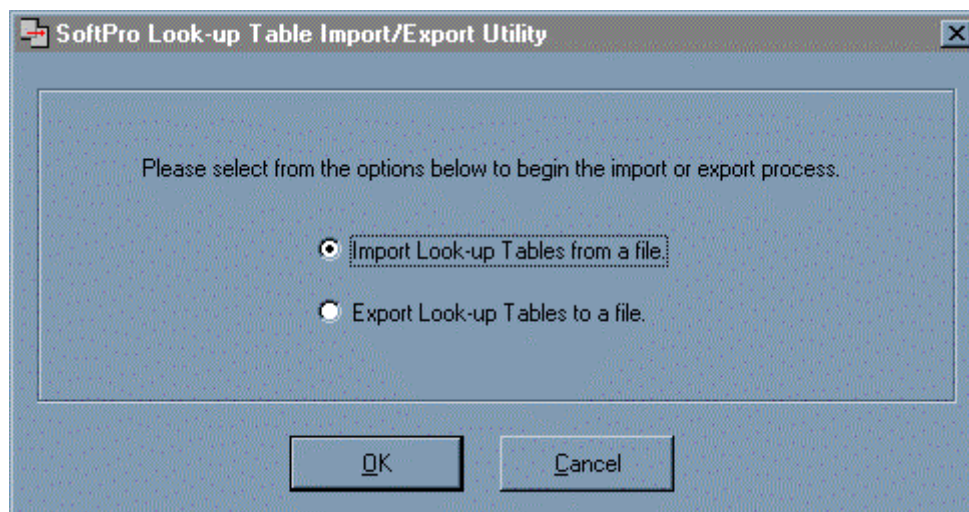
Instructions for loading Investors Title of SC Title Insurance Rates

NOTE: Make sure everyone is out of Proform before proceeding.

1. Click on file “**InvestorsTitleofSC.exe**”.
2. Select to open it, if given this option.
3. Select **Unzip**. This will install two files to **C:\Program Files\SoftPro**. Those files are “**LkuplmEx.exe**” and a text file named “**InvestorsTitleRatesSC**”.

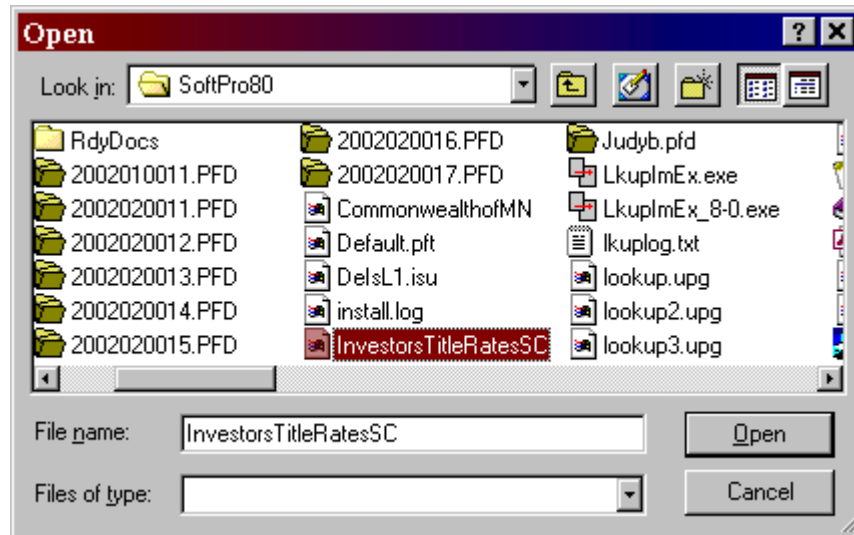


4. After the files are copied successfully, close out of the WINZIPSelf-Extractor.
5. Open up **Windows Explorer**.
6. Browse to **C:\Program Files\SoftPro**. Locate the file “**LkuplmEx .exe**”.
7. Double-click on the **LkuplmEx.exe** file to open it. The file defaults to “**Import Look-up Tables from a file**”.



8. Select **OK**.

9. In the **Look In** box at the top of the screen, browse out to the **C:\Program Files\SoftPro** directory and locate the text file **“InvestorsTitleRatesSC”**.



10. Select this file and click **Open**. This action will append the customer's look-up tables to now include the Investor's Title rate tables.
11. Close out of utility.